

工业通用柔性电缆

品质保证

QUALITY COMMITMENT

普睿司曼集团内设有从生产工艺到电缆设计、从原材料采购到最终检验和试验证书的多级质量保证体系。

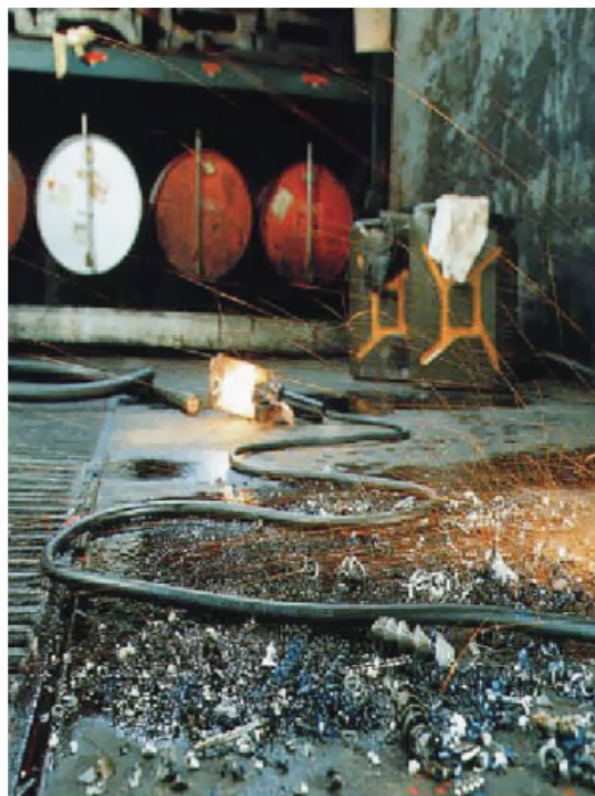
Lloyd质量保证组织根据ISO9001和ISO14001质量体系标准评定并通过了普睿司曼质量控制体系，并进行定期复审。

ISO14001是质量环境质量标准。

Prysmian has a built in multi-step quality assurance program, covering the production process from cable design and raw material purchasing, to final inspection and testing documentation.

The quality system of Prysmian has been assessed and approved and is audited regularly by Lloyd's Register of quality Assurance to the ISO 9001 and ISO 14001 Quality System Standards.

The ISO 14001 is the environment quality standard.



超宽适应领域

EXTREME VERSATILITY

- ◆ 一个产品系列，单一库存
One single range, One single stock
- ◆ 所有对通用工业电缆的要求
All the applications, of H07 RH-F type cables

应用

APPLICATIONS

- ◆ 潜水应用
Water environments
河流桥渡、泳池照明、潜水泵、饮水机、水管道、水库……
Systems crossing watercourses, pools lighting, swimming pools, power supply to immersed pumps and motors, well pumps, pipelines, ornamental lakes……
- ◆ 泛水地区
submersible areas
农业领域、沼泽、池塘、绿地、高尔夫球场、休闲水上乐园……
Farming land, orchards, vegetable gardens, parks and green areas, water catchment areas, golf course, water theme leisure parks……

卓越的防水性能

PERFECT WATERTIGHTNESS

- ◆ 长期浸泡使用
AD8 permanent immersion (NF C 15-100)
- ◆ 水压最大可达10 bar
Water pressure resistance 10 Bars

- ◆ 港口
Ports and dams
口岸、隧道、渠道、泊位、驳船……
Pons, tunnel-boring machines, dams, wharves, jetties……
- ◆ 处理和净化
Drainage and water treatment
监测站、废水处理厂、水处理厂、污水处理厂、水塔……
Drainage and sewerage works, water treatment plant, water towers, pressure pipelines……

STRONGER P
TO ENHANCE
SUPPORTING GLOBAL UTI
OF SMARTER AND GREEN
NET ONE LEADER,
TWO BRANDS. PASSION FOR INNOVA
NG OUR EXPERIENCE TODAY'S OPPORTUNITIES, TOMORROW'S POSSIBILITIES DRIV
SSION, DRIVING INNO
RANDS. ONE LEADER, TWO B
ENHANCING CUSTOMER PERFORMANCE LINKING TO
ET SUPPORTING THE GLOBAL ENERGY AND TELECOMS INFRASTRUCTURES PASSIO
MORROW CABLE SOLUTIONS
ES, TOMORROW'S POSSIBILITIES
L ENERGY AND TELECOMS INFR

苏州特雷卡电缆有限公司

地址: 苏州市相城经济开发区康元路88号
邮编215131
电话: +86 512 6578 9888
传真: +86 512 6578 9858

Suzhou Draka Cable Co., Ltd.

Add: No. 88 Kangyuan Road, Xiangcheng Economic
Development District, Suzhou, 215131
T: +86 512 6578 9888
F: +86 512 6578 9858

普睿司曼(天津)电缆有限公司

地址: 天津市西青经济开发区大寺工业园津荣道16号
邮编300385
电话: +86 22 2753 9605
传真: +86 22 8398 0773

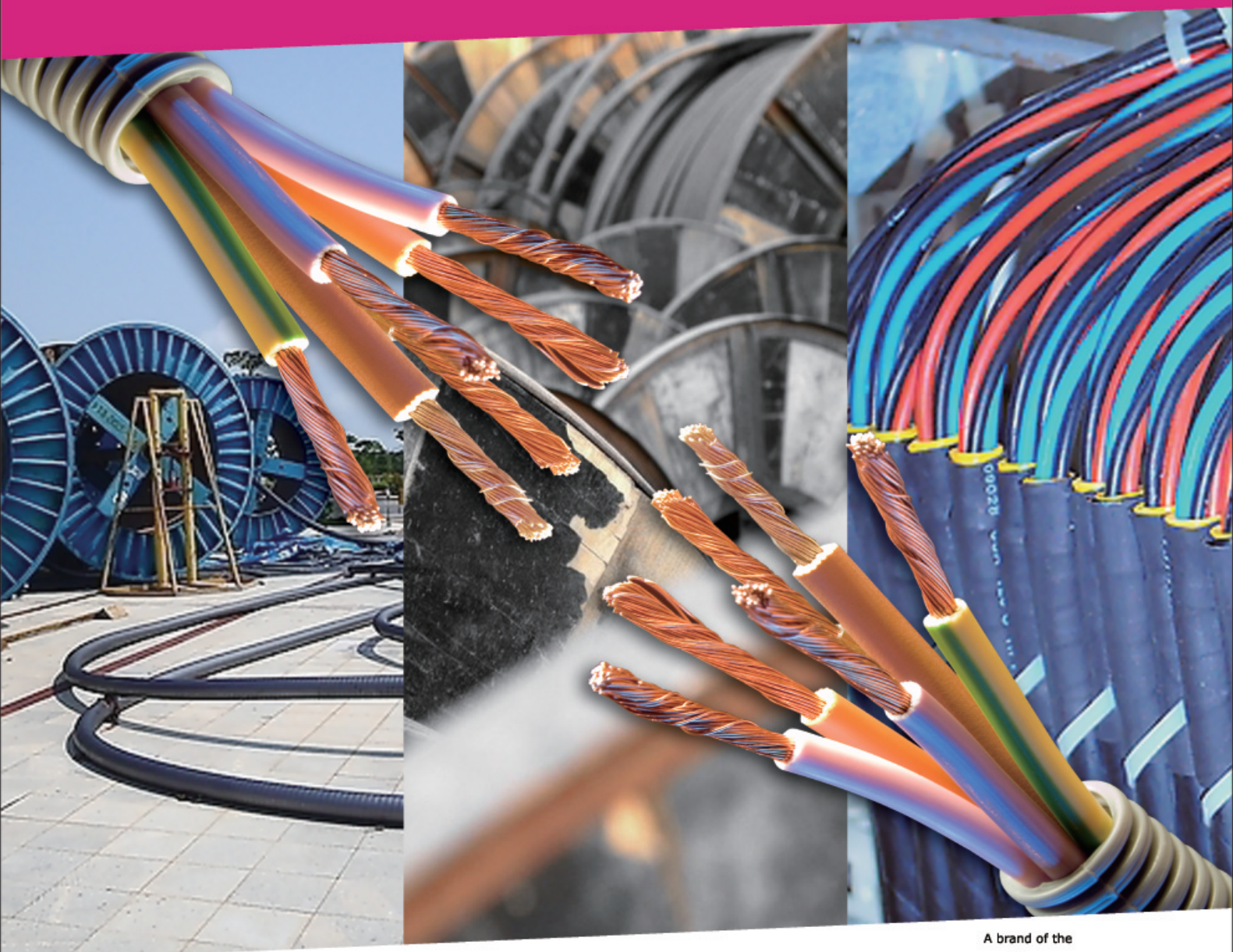
Prysmian Tianjin Cables Co., Ltd.

Add: 16, Jin Rong Road, Dasi Town, Xiqing
District, Tianjin, P. R. China 300385
T: +86 22 2753 9605
F: +86 22 8398 0773



工业通用柔性电缆

超宽适用领域 Whatever extreme conditions you encounter...
One cable meets all your requirements



A brand of the

Prysmian
Group

工业通用柔性电缆

ABOUT US 关于我们

普睿司曼电缆集团是世界级跨国公司。其前身是成立于1872年的比瑞利集团，并且两大核心业务—“能源电缆与系统”及“电信电缆与系统”在国际市场上都占有领先地位。

普睿司曼集团旗下拥有普睿司曼和特雷卡两大知名品牌，作为全球最大的电力和通信电缆制造商，在世界五大洲有91家生产厂家并覆盖50个国家，员工人数达20,000人。

普睿司曼集团提供全球解决方案，如电缆系统、系统设计及工程、项目管理、安装和售后服务。

普睿司曼集团致力于不断的产品创新，将重点放在研究和开发产品上，使自己一直处于竞争优势地位。所有这些成就都是通过普睿司曼自己的研发中心，与各个大学、科学院校与所有专业用户的合作取得的。普睿司曼全球机构为用户制定和提供先进的技术解决方案。

作为世界知名的普睿司曼集团的一部分，普睿司曼(天津)电缆有限公司生产范围较广的特种电缆和电力电缆，主要应用在可再生能源、石油石化等高端领域。

Prysmian Group is a world-class multinational company. Founded in 1872 as Ditta Pirelli & co., it has achieved a leading position for more than a century of operations in its two key international markets -- "Energy Cables & Systems" and "Telecom Cables & Systems." Prysmian Group is the world's largest manufacturer of power and telecommunications cables, through the union of Prysmian and Draka, with 91 plants in 50 countries in five continents. cmd with 20,000 people.

Prysmian Group is a global solutions provider, offering a wide range of integrated solutions, such as cable systems, system design and engineering, project management, installation and post-sale services.

Prysmian Group concentrates on continuous product innovation and on achieving a competitive edge by focusing on research and development. This is done through Prysmian's own R&D centres and by co-operating with universities, scientific institutions and above all, our customers. Prysmian's world-wide organization makes and delivers advanced technological solutions to customers anywhere in the world.

Prysmian Tianjin cables Co., Ltd. product portfolio is mainly concentrated in industry and special precision cables, which apply in renewable power, oil & gas, petrochemical, and extensive range demand the highest quality.



普睿司曼的TECHNERGY™是世界上技术最全面、最先进的电缆集成解决方案之一，可以满足工业、基础设施、承包商及用户的各种需求。

TECHNERGY integrated cabling solutions™ by Prysmian is one of the world's most comprehensive and technologically advanced answers to the specific requirements of industry, infrastructure, contractors and OEMs

TECHNERGY™ 电缆集成解决方案适用于12种不同产品范围。每一产品大类都为下列领域提供用户化及更加经济以满足更多功能需求的增值方案，如：

TECHNERGY integrated cabling solutions™ are designed and structured in twelve different product lines, each of which offer tailored, harmonious and value added solutions to the most diverse functional and economical requirements in the following fields;

- 铁路
- 船舶
- 石油和天然气
- 工厂和石油工化
- 矿用和隧道
- 国防
- Trains
- Marine
- Oil & Gas
- Plant & Petrochem
- Mining & Tunnelling
- Defence
- 起重和移动设备
- 电子机械
- 数据和通讯
- 运输基础设施
- 建筑与土地工程
- 发电厂
- Cranes & Mobile Equipments
- Electro-Mechanical
- Data & Communication
- Transportation Infrastructures
- Building & Civil Engineering
- Power Plants



想了解更多有关TECHNERGY™ 电缆集成解决方案的信息，请访问我们的网址：<http://www.technergy-ics.com>

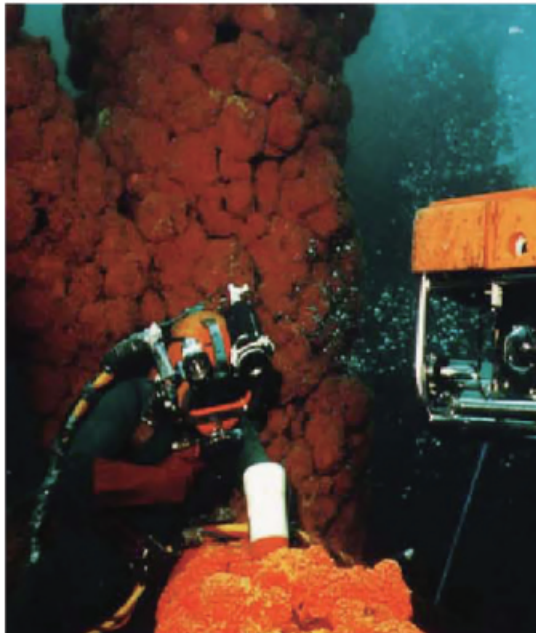
To find out more about the TECHNERGY integrated cabling solutions™, Prysmian Cables and Systems invites you to visit our website <http://www.technergy-ics.com>

工业通用柔性电缆

超强柔性

EXTREME FLEXIBILITY

- ◆ 250,000次弯曲寿命 (NF C32-102-1标准弯曲寿命为30,000次)
250,000 FLEXION CYCLES (Standard NF C 32-102-1 : 30,000 cycles)
- ◆ 扭力符合HD516标准
TORQUE: according to HD 516



应用

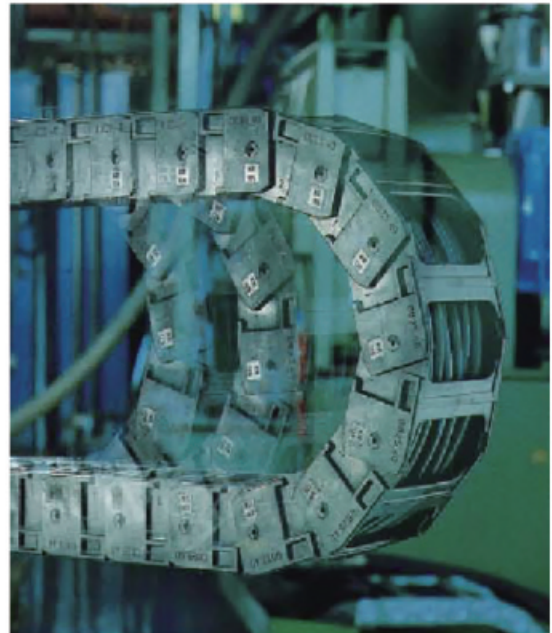
APPLICATIONS

- ◆ 维护
Handling
行车起重机: 牵引链; 移动设备; 起重机; 工业卡车……
Gantry cranes, chains with simplified cables, mobile equipment, cranes, materials handling trucks……
- ◆ 移动式电源供应装置
Mobile supplies
供电台车; 旋转装置; 压缩机; 振动器……
Industrial trucks, rotating systems, compressors, vibrating machines
- ◆ 施工现场
Building sites
临时设施: 钻机和打孔装置; 发电机; 移动变压器柜……
Temporary installations, tunnel boring machines, power generators, technical galleries, transformation stations……
- ◆ 舞台及音、视频设备
Stage and audio visual equipment
剧院; 会议厅和音乐厅; 展览中心; 片场……
Theatres, conference rooms, concert, exhibition, entertainment halls, commercial promotions……

超强环境耐受性

EXTREME RESISTANCE

- ◆ 优异的防火性能
Fire: category c2 (according to NF C 32-070)
- ◆ 高耐冲击强度
Shock resistance: AG3 (according to NF C 15-100)
护套对矿物油和油脂的耐受性能 (温度可达50℃)
Resistance of the hose to grease and mineral oils (up to 50°C)
- ◆ 臭氧耐受性能(O3)
Ozone resistance: OZONE(O3)
- ◆ 耐严寒性能: 动态使用条件下可达-30℃, 静态使用条件下可达-50℃
Resistance to the cold: -50°C in static and -30°C in dynamic mode
- ◆ 允许最高导体温度: 标准工作温度为+85℃ (标准要求为+60℃), 短路状态可达+200℃
Maximum temperature at the core: +85°C in service (standard +60°C) + 200°C in short circuit



- ◆ 可能发生机械冲击和承力的场所
Mechanical shocks and compression
施工现场; 电机引线; 废物处理厂; 照明台架; 造纸厂……
Building sites, machine wiring, waste disposal plants, lighting frames, paper mills……
- ◆ 寒冷条件下
Cold
冷藏室照明; 冬季运动用电气设备 (雪橇牵引装置; 造雪机; 速降滑雪照明); 冷冻食品厂……
Lighting in coldrooms, electrical equipment in ski resorts (ski lifts, snow machines, lighting of the slopes), frozen food factories……
- ◆ 驱动机械
Vibrating machines
压缩机; 发电机; 低温装置和冷藏设备……
Compressors, electric generators, refrigeratin units……
- ◆ 苛刻的使用环境中
Tough industrial environments
爆炸危险区; 化学品生产……
Explosive atmosphere workshops, waste disposal plants, chemical……

工业通用柔性电缆

电缆性能

CABLE CHARACTERISTICS



温度范围
+90°C -25°C
Temperature Range
+90°C -25°C



最小弯曲半径
为4D
Minimum
4D



抗冲击
AGS



良好
Very Good



耐泼溅
AD8



耐化学性良好
Good



耐火等级C2
NF c 32-070
C2



可弯曲
Extra
Flexible

本电缆的特殊设计使其具有高度的灵活性，并对不同的气候条件、油和脂、机械及热应力等各种环境因素具备极高的耐受性。

These cables are designed to provide high flexibility and have capacity to withstand weather, oils and greases, mechanical and thermal stresses.

本电缆能够长期浸水使用，深度可达100米（10bars）。

The cables can be permanently submerged (AD8) at depths of up to 100m (10bars).

本电缆亦可用于高达1000V额定电压的固定敷设。

The cables can also be used in fixed installations at up to 1000V rated voltage (NF C 15-100, 512.1.1)

设计标准

THE DESIGN STANDARD

DESIGN THE STANDARD

GB5013.4

IEC60245-4

EN50525-1, EN50525-2-1

导体

CORE

材料：镀锡铜导体或裸铜导体

Metal: tin plated copper or bare copper

截面形状：圆截面

Shape: round

柔软度：5类

Flexibility: Class 5 flexibility

最大导体温度：最大85°C，短路状态200°C，标准

工况60°C

Max. temperature at conductor: 85°C maximum, 200°C with short circuit, 60°C in normal conditions.

绝缘

INSULATION

交联型橡胶

Elastomer (spacer optional)

线芯识别：

Core identification:

● ●

蓝-棕

blue-brown

● ● ●

棕-黑-灰，或绿/黄-蓝-棕

brown black-gray, or g/V-blue-brown

● ● ● ●

蓝-棕-黑-灰，或绿/黄-棕-黑-灰

blue-brown-black-gray, or g/y-brown-black-gray

● ● ● ● ●

蓝-棕-黑-灰-黑，或绿/黄-蓝-棕-黑-灰

blue-brown-black-gray-black, or g/y-blue-brown-black-gray

外护套

OUTER SHEATH

氯丁橡胶或同等材料，黑色

Poly chloroprene or equivalent product, black colour

电缆标识：

Marking:

Prysmian Tianjin-Cables CO.,Ltd-cable name-N x SIZE-year



槽中
In trough



管道中
In pipe



带敷设保护
With protection



空气中
Open air



移动机械
Mobile
machines



浸水使用
Submerged



最低操作温度-30°C
Minimum
temperature
-30°C



-20°C至+60°C时，最
小弯曲半径6D
-30°C至-20°C
r=6D for temperature from
-20°C to +60°C
r=12D for temperature from
-30°C to -20°C

当外护套表面温度超过50°C时，应避免人及动物接近电缆。当环境温度达到60°C时，允许电流值应乘系数0.71。

When the temperature on the surface of sheath exceeds 50°C, the cables must be inaccessible to persons and animals.

With a core temperature limited to 60°C, multiply the permissible current values by 0.71

工业通用柔性电缆

H07 RN-F/YCW(IEC245)

导体标称截面积 Nominal cross sectional area mm ²	最大外径 Maximum overall diameter mm	电缆估重 Approximate cable weight kg/km	最大额定电流 30℃架空放置 Max.Current rating in free air 30℃ A	最大额定电流 20℃架空放置 Max.Current rating in free air 20℃ A	压降 Voltage drop Cos ρ =0.8 V/A/km
1 Core					
1.5	7.2	52	23	30	24
2.5	8	68	32	39	14
4	9	95	43	51	9
6	11	125	56	63	6
10	12.5	200	77	83	3.5
16	14.5	275	102	108	2.2
25	16.5	395	132	138	1.5
35	18.5	520	162	167	1.1
50	21	720	198	198	0.77
70	23.5	970	256	244	0.57
95	26	1240	314	290	0.46
120	28.5	1540	365	330	0.38
150	31.5	1890	422	372	0.32
185	34.5	2300	484	418	0.26
240	38	2940	573	482	0.23
300	41.5	3660	663	544	0.2
400	46.5	4710	789	637	0.18
500	51.5	5950	905	721	0.16
2 Cores					
1	10.5	94	19.6	28	39.2
1.5	11.5	120	24	35	27.7
2.5	13.5	175	34	46	16.2
4	15	245	46	60	10.1
6	18.5	315	60	77	6.7
10	24	590	82	100	3.9
16	27.5	790	110	131	2.5
25	31.5	1140	142	166	1.7
35	34.6	1480	177	200	1.2
50	37	2030	215	238	0.86
3 Cores					
1	11.5	120	17.2	23.8	33.9
1.5	12.5	150	22	30	23
2.5	14.5	215	29	39	14
4	16	300	40	51	8.7
6	20	395	52	63	5.8
10	25.5	740	72	83	3.4
16	29.5	1000	95	108	2.2
25	34	1450	121	138	1.4
35	38	1890	151	167	1
50	44	2580	183	198	0.74
70	49.5	3440	235	244	0.55
95	54	4490	285	290	0.43
120	59	5500	331	330	0.36
150	66.5	6750	378	372	0.29
185	71.5	8240	430	418	0.26
240	81	10660	515	482	0.21

工业通用柔性电缆

导体标称截面积 Nominal cross sectional area mm ²	最大外径 Maximum overall diameter mm	电缆估重 Approximate cable weight kg/km	最大额定电流 30℃架空放置 Max.Current rating in free air 30℃ A	最大额定电流 20℃架空放置 Max.Current rating in free air 20℃ A	压降 Voltage drop Cos ρ=0.8 V/A/km
3+1 Cores					
50+35	47.5	3080	183	198	0.74
70+50	53.8	4130	235	244	0.55
95+70	57.3	5130	285	290	0.43
120+70	63	6410	331	330	0.36
150+70	70.2	7640	378	372	0.29
185+70	75.8	9420	430	418	0.26
240+95	81.8	11680	515	482	0.21
4 Cores					
1	12.5	145	17.2	23.8	34
1.5	13.5	190	22	30	23
2.5	15.5	270	29	39	14
4	18	380	40	51	8.7
6	22	510	52	63	5.8
10	28	910	72	83	3.4
16	32	1240	95	108	2.2
25	37.5	1840	121	138	1.1
35	42	2390	151	167	1
50	48.5	3280	183	198	0.74
70	54.5	4410	235	244	0.55
95	60.5	5770	285	290	0.43
120	65.5	7020	331	330	0.36
150	74	8650	378	372	0.29
185	79.5	10570	430	418	0.26
5 Cores					
1	13.5	180	17.2	23.8	34
1.5	15	230	22	30	23
2.5	17	325	29	39	14
4	19.5	475	40	51	8.7
6	24.5	630	52	63	5.8
10	30.5	1120	72	83	3.4
16	35.5	1530	95	108	2.2
25	41.5	2280	121	138	1.4
6 Cores					
1	14.2	266	15	21	34
1.5	15.1	310	20	27	23
2.5	17.6	437	25	34	14
7 Cores					
1	14.4	280	15	21	34
1.5	15.6	335	20	27	23
2.5	17.8	461	25	34	14
8 Cores					
1	16.5	357	15	21	34
1.5	17.8	428	20	27	23
2.5	20.5	593	25	34	14
12 Cores					
1	18.5	491	15	21	34
1.5	19.9	585	20	27	23
2.5	21.9	753	25	34	14
16 Cores					
1	20.6	559	15	21	34
1.5	21.8	657	20	27	23
2.5	25.5	944	25	34	14
18 Cores					
1	22.6	742	15	21	34
1.5	23.0	792	20	27	23
2.5	26.7	1123	25	34	14
24 Cores					
1	25.2	831	15	21	34
1.5	26.8	986	20	27	23
2.5	31.4	1410	25	34	14

最大额定电流值对应于单根电缆安装条件下:
Maximum current rating values are for single cable installation:
a) 直埋式敷设热阻系数=1K.m / W(20℃时)敷设深度=600mm
Directly buried in ground of thermal resistivity=1k.m/w20℃
Installation depth=600mm
b) 架空电缆槽安装, 镂空式电缆槽, 单线夹, 电缆梯架, 离墙
线夹固定, 避免阳光直射, 环境温度=30℃

In air, on cable trays, perforated cable trays, single cleats, cable ladders, fixed by cleats and separated from the wall, protected from the sun, ambient temperature =30℃
表中“最大额定电流”和“压降”数值对应于下述电缆:
The “Maximum Current Rating” and “Voltage Drop” values shown in the tables relate to the following cables:
-1,3,4,5芯的三相电缆
Three phase cables with 1,3,4 or 5 cores,
-1或3芯的单相电缆
Single phase cables with 1 or 3 cores